

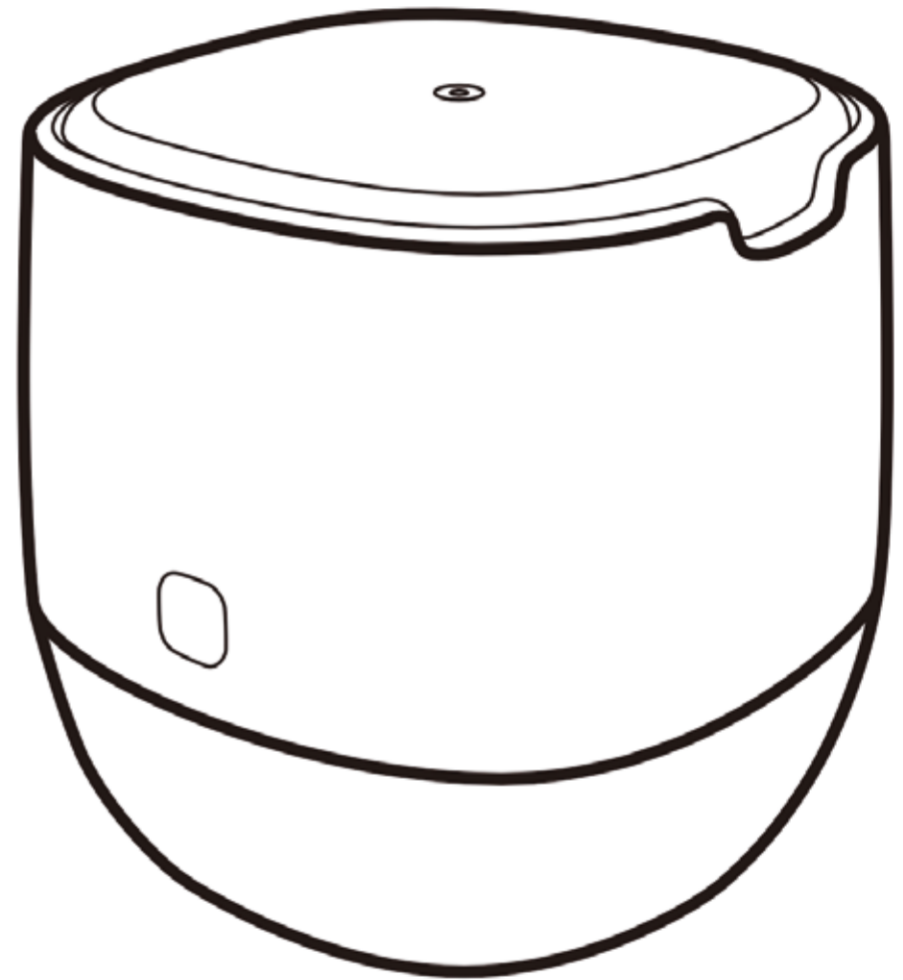
Aroma  
trick

A-Trick 40 *Advance*  
User Guide



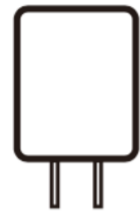
## Product Specifications

Model	A-Trick 40 advance
Dimension	125*125*129 mm
Machine N.W.	550 g
Power	1W
Voltage	5V
Bottle Capacity	30 ml
Coverage	up to 400 m <sup>2</sup> /4000 ft <sup>2</sup>

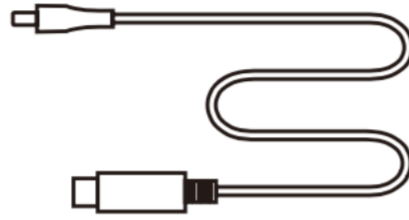


## Essentials part of your product

Make sure nothing is missing from the items below:



**Plug**

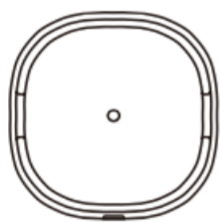


**Cable**

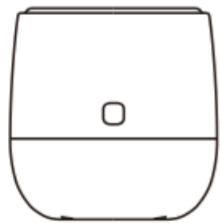


**User manual**

## Instruction



**Atomized head**



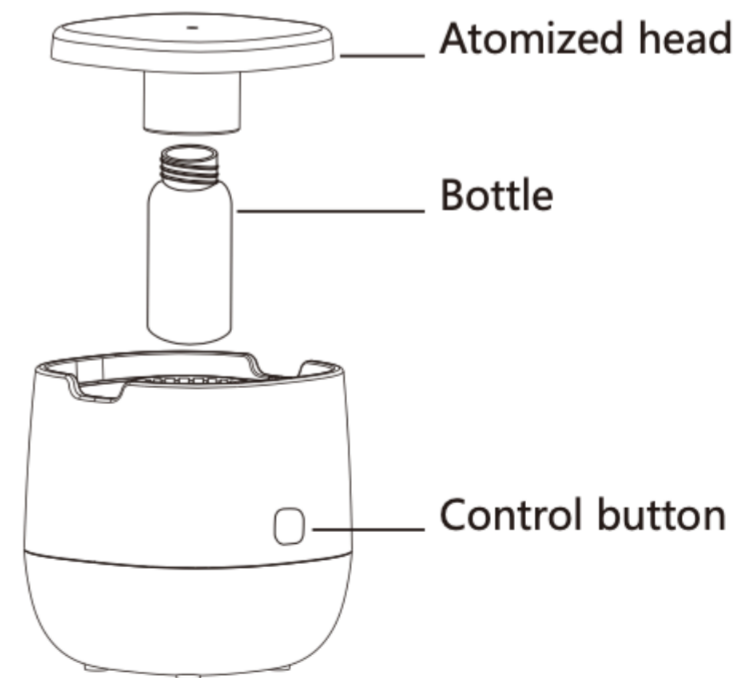
**Bottle**



**Control button**

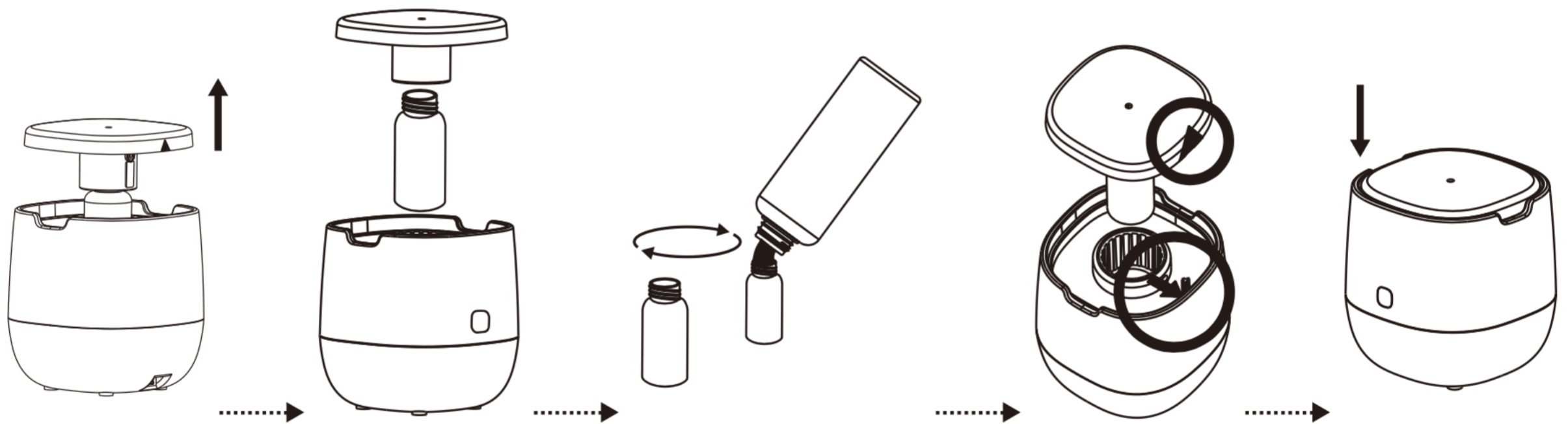


**Cable**



# Installation

1. Take out the atomized head
2. Twirl the bottle
3. Refill the fragrance or change a new bottle of fragrance.
4. Check if the direction is correct into machine.
5. Put the atomized head back.



## Description

Trendy leading in scent marketing with whisper silent operation and soft light, adding pleasant aroma for your sleep. Smart appearance, room temperature atomization gives you a pure essential oil relaxing journey. Double pumps design I engthens the product lifetime.

### Note:

1. After installation, please keep the machine vertical. Tilt or lie flatly may cause oil overflow. the machine efficiency may be affected if the circuit board is contaminated.
2. Shall not modify, disassemble or repair the machine. any failure happens, please contact relevant technician in time.



Nanometer particles



Button start



Soft light



Smart appearance

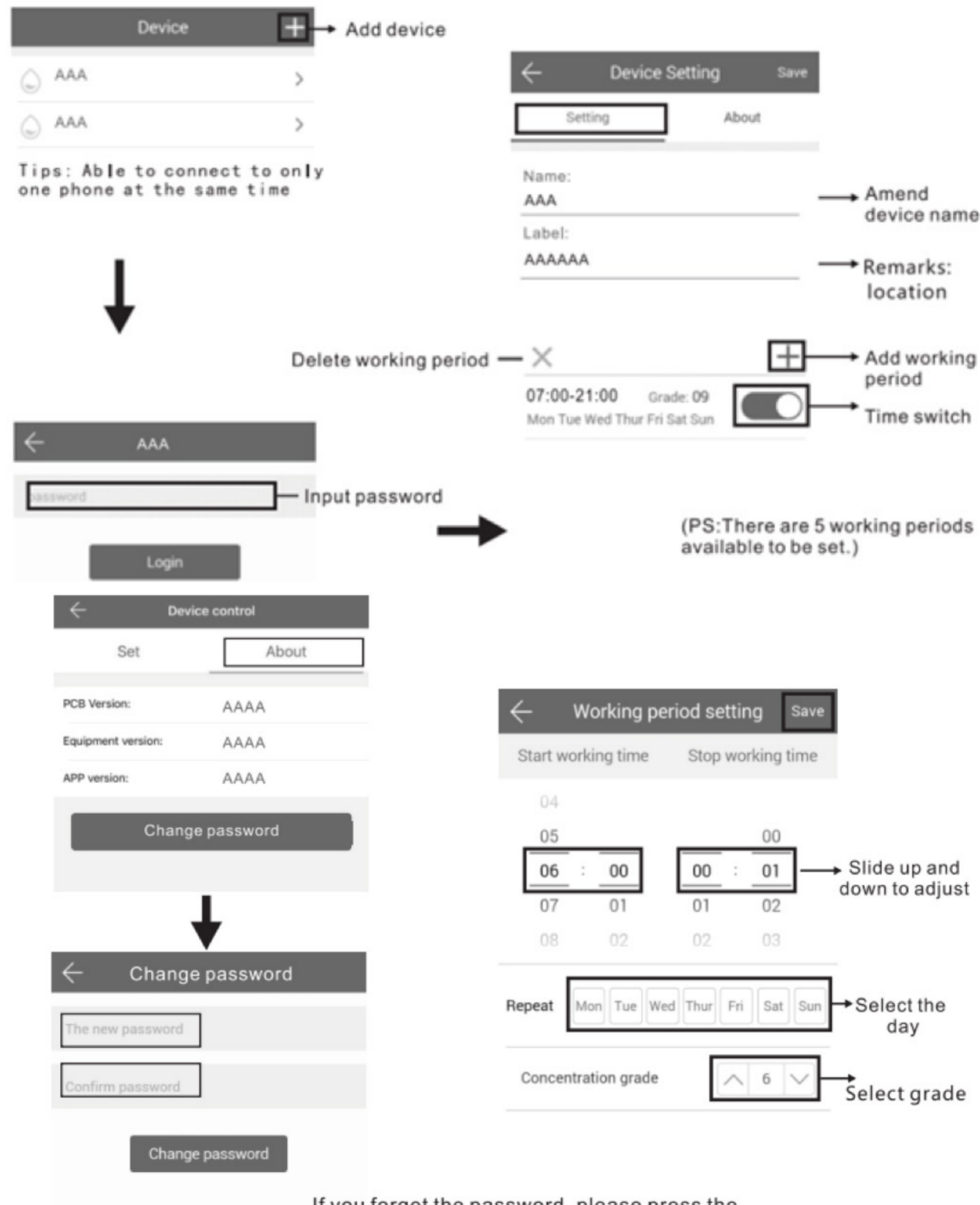


Supper silence



Double pumps design

Let's get you started  
by downloading the app



If you forget the password, please press the reset button to restore the factory settings. The factory settings password is 8888.

## Boost your experience with our set-up tips

- The increase in the grade is likely to result in higher consumption.
- Our recommendation is to start by grade 8 then increase or decrease based on your preference.
- Less hours of operation results in extending the life of the bottle.
- We recommend to operate the aroma device for half an hour before the activity/the event begins

# Caution



Shall not modify, disassemble or repair the machine arbitrarily. vv



Shall not damage the power cord, force to bend, yank, heavy load, clip or reprocess.



- o Shall not use the AC plug when it is damaged or un-matched with the socket.
- o Shall not wet the machine or the AC plug.
- o Shall not use overloaded power socket, wire or broken plug.



Shall not touch the wire or product shell when thundering or/and lightening.



Shall not disassemble the machine when it is under operation.

For any inquiry, please contact our live installation assistant





# Warning:

- After installation, please keep the machine vertical, tilting the machine flat will cause oil leakage and damage to the machine.
- Do not refit, disassemble or repair the machine if you are not a technician. If the machine breaks down, please contact our customer care for help [customercare@aromatrick.co.uk](mailto:customercare@aromatrick.co.uk)
- It is invalid to touch/tap the digital timer button when machine is under lock status.
- Each time cycle should be between (00:01 until 23:59), if you need your device to operate throughout the night time, make sure you divide the operation time to **two cycles**.



do not tilt/turn/move  
when bottle is in device

# TROUBLESHOOTING

Before asking to have the machine repaired, please try to diagnose the problem first following the instructions below:

Symptom	Remedy
Does not diffuse	<ul style="list-style-type: none"> <li>• Check the power is on or off</li> <li>• if the machine is in “not working period”, it stops diffuse.</li> <li>• the pump is damages, change a new one.</li> </ul>
Spray little	<ul style="list-style-type: none"> <li>• Atomized nozzle may be blocked, diffuse with alcohol to do cleaning.</li> <li>• pump is aging, change a new one.</li> </ul>
Spray liquid	<ul style="list-style-type: none"> <li>• Atomized nozzle is damaged, change a new one.</li> <li>• machine is tilted or lay flat, please make it stand on end.</li> </ul>
Oil spill	<ul style="list-style-type: none"> <li>• bottle is loose, screw it to the right place.</li> </ul>
Abnormal sound	<ul style="list-style-type: none"> <li>• Pump is loose, install it correctly.</li> </ul>

- If the machine programs crashes or other abnormal condition occurs, please restart the machine to restore factory setting (method: press ENT key about 5 minutes until you hear “beep” sound)

# CLEANING DIFFUSER

Diffuser should be cleaned regularly, timing recommendation below:

1. Refilling/ changing fragrance in reservoir.
2. Scenting strength becomes weak.

- Turn off Scenting Diffuser before cleaning.
- Place clean bottle with small quantity of “Methylated Spirits”/ Industrial alcohol.
- Turn on Machine and let diffuse for 5 minutes.
- Turn off power and unscrew cleaning fluid bottle.
- Replace with fresh fragrance, machine is now ready for diffusing.

# Roma trick