

Roma  
trick

A TRICK 20 TO MOVE



Manifest Brand Development Ltd

Company Reg. Number 13498335, VAT Number GB 424451222, [customercare@aromatrick.co.uk](mailto:customercare@aromatrick.co.uk)

## Product parameters

Product Dimension: 70\*70\*130mm

Material: Aluminum alloy+ Anti-corrosion PP

Input voltage/current: DC5V / 0.5A

Output voltage/power: DC3V / 1.5W

Battery capacity: 500mah

Charging port: Type-C

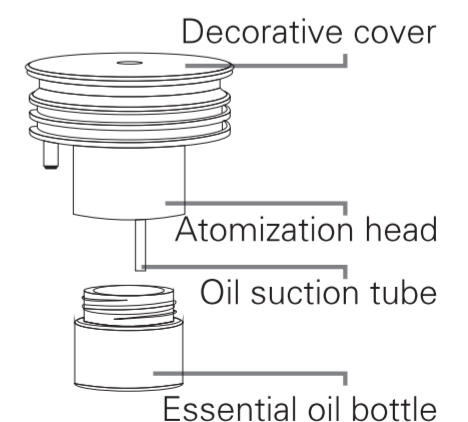
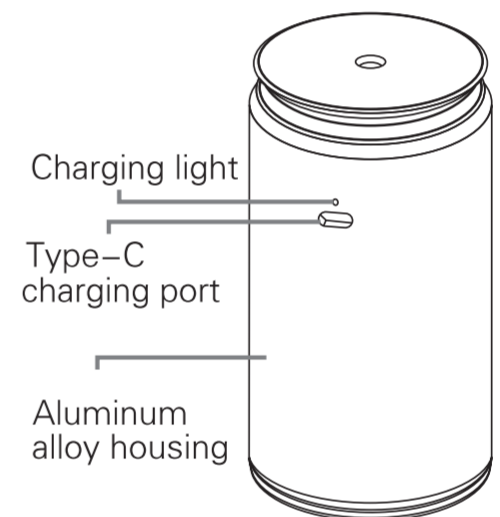
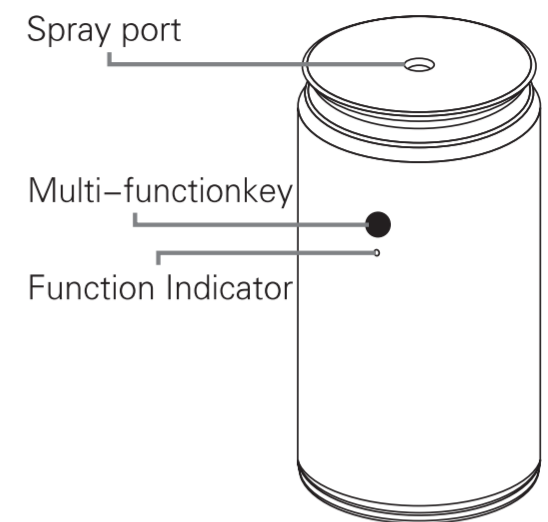
N.W/G.W: 0.34kg / 0.39kg

Inner box size: 74\*74\*150mm

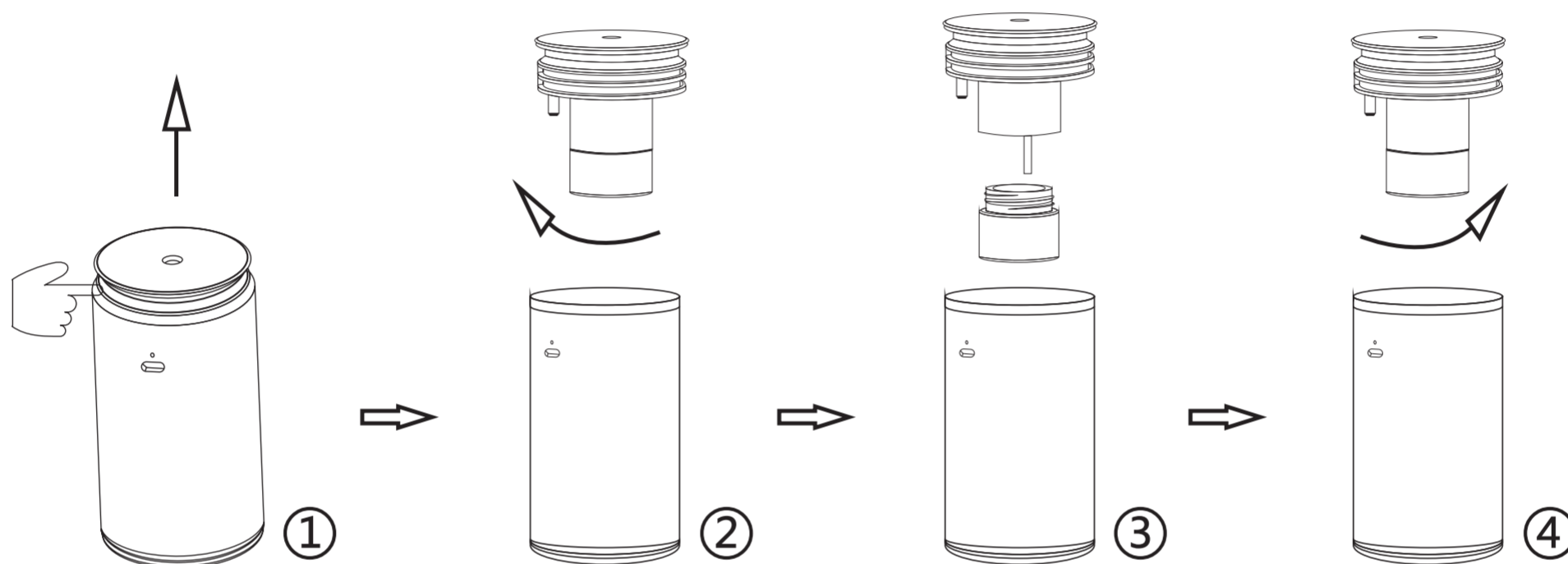
Shipping Package: 25 sets/box 10kg/box

Working principle: Two-fluid atomization technology +  
intelligent microcomputer control

Product accessories: intelligent aroma diffuser \* 1 unit;  
Type-C cable \* 1pcs; User manual \* 1pcs



## Essential oil replacement



- ① Hold the body with one hand and grab the atomization head with the other hand;
- ② Extract the atomization head upward (do not flip it over to prevent the liquid from leaking out);
- ③ Turn the bottle counterclockwise and pour in the essential oil;
- ④ Turn the essential oil bottle clockwise into the atomization head.

## Operation Instruction

### ▶▶ 【 Power on / Power off 】

--Long press the button for 2.5 seconds (the blue light is on twice), enter the home mode and turn on the red light (the red light keeps flashing).

--Long press the button 2.5 seconds (red light flashes twice) to prompt shutdown.

◆ The device shuts down automatically 4 hours after startup.

### ▶▶ 【 Operation Setting 】

--Switching the working gear with a click of a button in the working state of the device ( 1 > 2 > 3 > 1 > 2 > 3 By this loop )

◆ Red light on: work for 5 seconds ,then stop after 180 seconds (defaults to the operating position when last switched off)

◆ Blue light on: work for 8 seconds ,then stop after 180 seconds

◆ Yellow light on: work for 10 seconds, then stop after 180 seconds

### ▶▶ 【 Charging indicator 】

◆ In charging: red light on

◆ Fully charged: blue light on

◆ When the battery voltage is less than 2.8V, the red light flashes to indicate automatic switch-off.



## Device Cleaning

The device needs to be cleaned when the following conditions occurs:

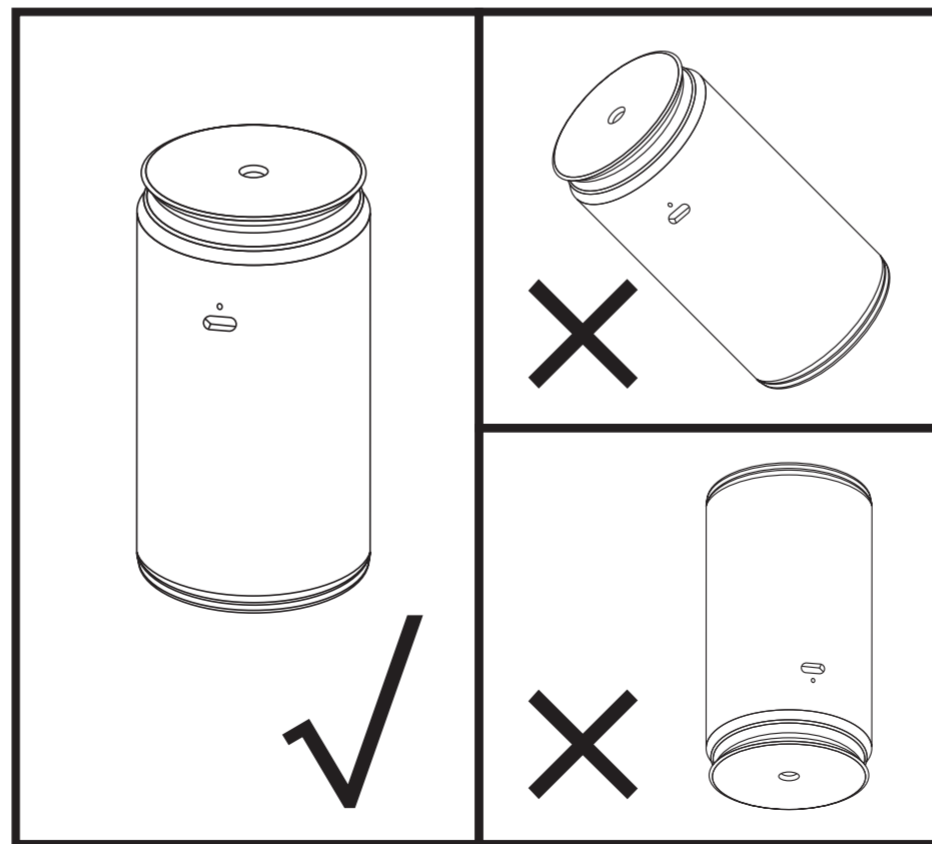
- 1、 You are ready to change to another essential oil for use.
- 2、 Atomization volume is getting smaller.

Cleaning steps:

- 1、 Pull out the nebulising head and twist off the essential oil bottle.
- 2、 Pour an appropriate amount of industrial alcohol into the bottle, then start the device to spray for 5–10 minutes to prevent other flavours from mixing in.
- 3、 Wait for the bottle to dry and finish cleaning.

## ⚠ Warning

- 1、 Please keep the device upright, tilting it > 60 degrees or turning it over will cause oil leaks and damage to the device.
- 2、 Do not dismantle/repair the machine if you are not a professional, please contact us in time if the machine breaks down.



## Fault resolution

Fault Description	Resolution
No atomization	<ul style="list-style-type: none"> <li>① Check for power or energisation.</li> <li>② Check if the air pump is working.</li> <li>③ Check if the air pipe is broken or off.</li> <li>④ Check if the atomization core is loose or blocked.</li> </ul>
Small atomization volume	<ul style="list-style-type: none"> <li>① Check if the battery capacity is too low</li> <li>② Check if the air pump is abnormal.</li> <li>③ Check if the air pipe is loose or broken.</li> <li>④ Check if the atomization core is loose or blocked.</li> </ul>
Oil leakage	<ul style="list-style-type: none"> <li>① Check if the flat washer is deformed or broken</li> <li>② Check if the atomization head is broken.</li> </ul>
Abnormal noise	<ul style="list-style-type: none"> <li>① Check if the air pump is loose</li> <li>② Check if the air pump is damaged.</li> </ul>

# Roma trick



## Caution

- 1、 Do not touch the product under high temperature exposure to prevent scalding.
- 2、 The temperature inside the car under the sun is greater than 100 degrees, please turn off the device timely to prevent accidents when you left the car.
- 3、 To ensure the effect of use, please refill aromatherapy liquid in time.
- 4、 Please keep the essential oil sealed and away from sunlight before use.
- 5、 Avoid dripping onto oil-based paint/leather/fabric surfaces in case of corrosion damage.
- 6、 Keep out of direct contact with children to avoid accidental ingestion.
- 7、 If contact with skin or eyes accidentally, please flush with water or seek medical attention promptly.
- 8、 This product is not waterproof, please do not get wet or splash water.

We reserve the right to change and upgrade our products without prior notice to customers.