

Aroma  
trick

## A TRICK 350 CLASSIC



Manifest Brand Development Ltd

Company Reg. Number 13498335, VAT Number GB 424451222, [customercare@aromatrick.co.uk](mailto:customercare@aromatrick.co.uk)

## Precautions

1. After installation, please keep the machine vertical and do not turn it upside down, tilt or flip the machine to avoid oil leakage and damage to the machine.
2. Do not use overloaded power supplies, sockets, and damaged power cords and plugs. If used, it may endanger your safety and may cause a fire.
3. Please do not try to open the machine shell to avoid damage to the machine. If you are not a technician, you may not modify, disassemble or repair the machine. If the use of the machine is abnormal, please consult sales and after-sales service in time.
4. When the machine is working, please do not disassemble the machine or shake the machine vigorously, which will cause the machine to work abnormally.
5. Do not place the machine in water or in water, and do not use a water-draining power adapter.
6. When encountering thunder in natural weather, do not operate the machine or touch the power cord to avoid the risk of electric shock

## Product parameters

Machine size: 180\*70\*200mm

Coverage: 430-500m<sup>2</sup>/1300-1500m<sup>3</sup>

Product weight: 2.1kg

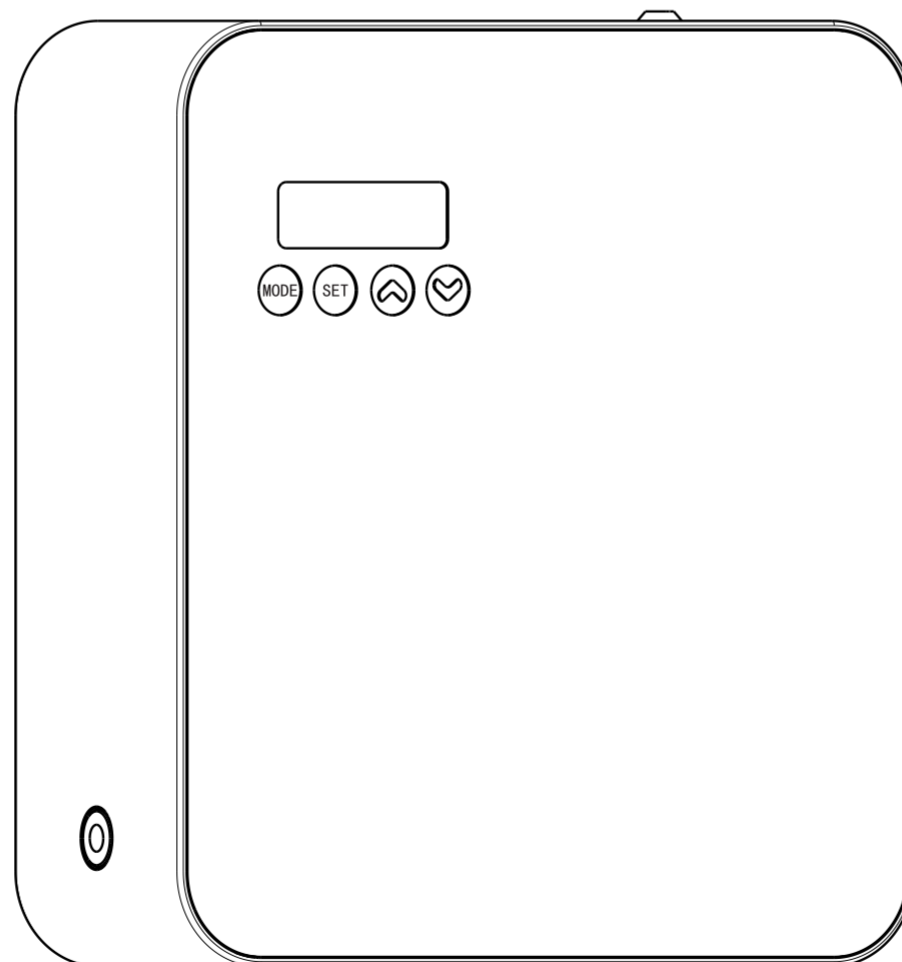
Essential oil capacity: 200ml

Voltage: 12V

Rated power: 4W

Oil consumption: 2.2-2.5ml/h

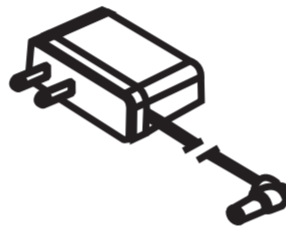
Working noise: ≤35dba



## Packaging accessories



Essential oil  
bottle



Adapter



filter head



Atomization  
head

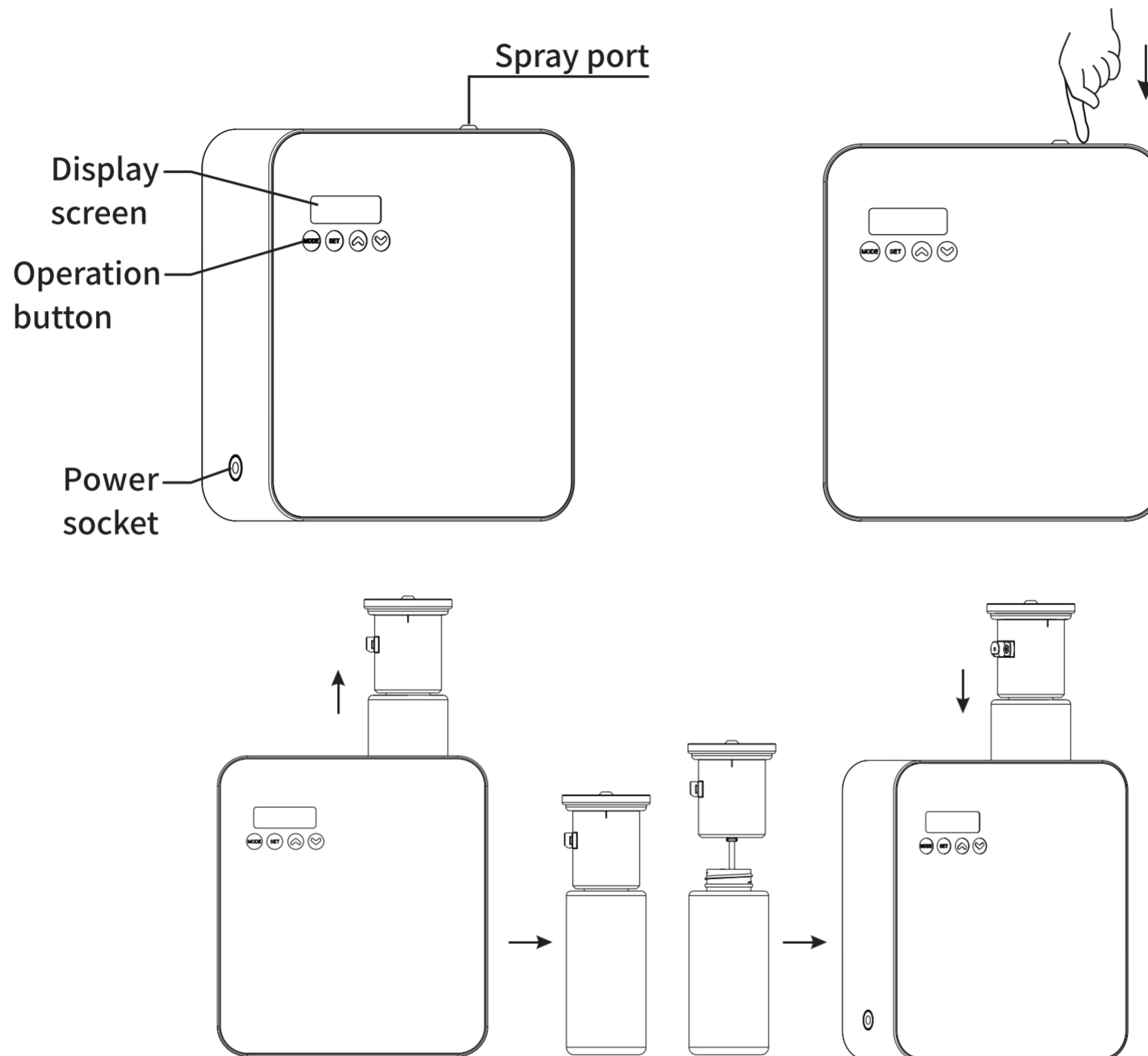


PE washer



Manual

## Operation instructions



1. Press the top atomization head position, and the atomization head will pop out;
2. Remove the atomization head, open the atomization head and essential oil bottle;
3. Add essential oil to the bottle and install it on the machine;
4. Connect the power supply, set the machine working time, and the machine will work according to the set time.

## Setup

### ◆ boot up:

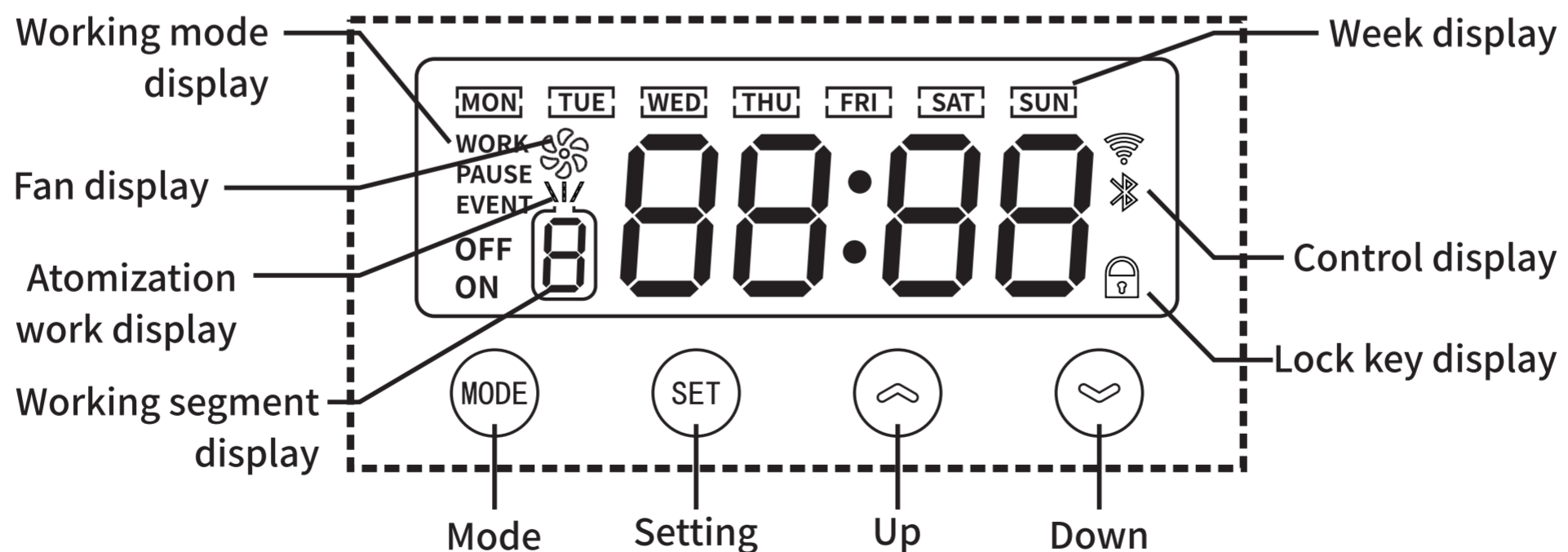
Connect to the power adapter, insert one end of the power adapter into the machine's dc power access hole [dc power in] plug, and one end into a power socket. At this time, the machine's lcd screen displays the operating status of the system machine.

**[on/off]:** the display of on means that the machine is in the running time period, and the display of off means that it is not in the time period.

**[work/pause]:** displaying work means that the machine is in a working state, and displaying pause means that the machine is in a paused state.

### ◆ Detailed description of key functions:

#### Display screen





The machine settings allow 5 running periods, and the working day of the machine can be selected according to multiple options.

**【MODE】**: Switch between different page options, including system time, first time period start time, first time period stop time, fragrance concentration. The start time of the second time period, the stop time of the second time period, and the fragrance concentration. The start time of the third time period, the stop time of the third time period, and the fragrance concentration. The start time of the fourth time period, the stop time of the fourth time period, and the fragrance concentration. The start time of the fifth time period, the stop time of the fifth time period, and the fragrance concentration.

**【SET】**: Enter the setting state, you can skip the setting content of the current page: including time, date, concentration, etc.

**【 ⤴ 】**: Fine-tune up, you can adjust the current time period data, fragrance data, and work date selection.

**【 ⤵ 】**: Fine-tune down, you can adjust the current time period data, fragrance data, and work date selection.

### ◆ Set the system time

Adjust the setting time and use time to be consistent with the current time. The system time is a 24-hour clock.

Press the **【SET】** button for the **FIRST** time: the hour number of the time period flashes, and press **【 ⤴/⤵ 】** to adjust the **HOUR**.

Press the **【SET】** **BUTTON** for the **SECOND** time: the hour is set, the number of minutes flashes, the score is set, and press **【 / 】** to adjust.

Press the **【SET】** button for the **THIRD** time: the number of minutes is adjusted, the current working day beats, set the working **DAY**, and press **【 / 】** to adjust.

Press the **【SET】** button for the fourth time: confirm that the system time is set.

### ◆ Restore factory settings

Press and hold the **【MODE】** button for about 5 seconds to restore the factory settings.

The factory setting mode is: work every day, working period 08:00-22:00, work for 60 seconds, pause for 60 seconds.

## ◆ Equipment running time and adjustment of fragrance concentration

Press the **【MODE】** button for the first time: **【EVENT 1 ON】** is displayed on the lcd screen. Press **【SET】** for the start time of the first period.

The number of hours flashes, adjust the number of hours through **【∧/∨】**, press **【SET】** for the second time, the number of minutes flashes, and adjust the score through **【∧/∨】**, press **【SET】** the working day number for the third time to flash, and adjust the working day through **【∧/∨】**.

(Note: each time period can only select the week in the open time period)

Press the **【MODE】** button for the second time: the lcd screen displays the end time of the first time period of **【EVENT 1 OFF】**, press the **【SET】** button to enter the adjustment, and adjust the hours and minutes through **【∧/∨】**.

Press the **【MODE】** button for the third time: **【SCENT/WORK】** is displayed on the lcd screen to set the working time of the machine for each fragrance spraying cycle. From 5 seconds to 300 seconds, you can adjust it for 5 second at a time through **【∧/∨】**.

Press the **【MODE】** button for the fourth time: **【SCENE/PAUSE】** is displayed on the lcd screen to set the machine pause time for each cycle from 5 seconds to 500 seconds. Press **【∧/∨】** to adjust it for 5 seconds at a time, and continue to press the **【MODE】** button until all 5 time periods are set.

①(the functions of the 2nd, 3rd, 4th, and 5th time periods are the same as the first time period)

②(when the running time is set, the shutdown time must not precede the boot time. if the running time needs to span 00:00, two time periods need to be set separately)

③if you do not need to set a separate time period, after the first time period is set, press the **【MODE】** key to directly enter the **【SECNT/WORK】** mode.

Press and hold the **【SET】** button for 5 seconds, and the display screen appears **【🔒】** to indicate that the button is locked. Press and hold the **【SET】** button for 5 seconds to unlock the display screen to display the main interface.

Press and hold **【∨】** for 5 seconds, the display **【♣️】** appears to indicate that the fan is on, press and hold **【∨】** for 5 seconds, the display **【♣️】** disappears to indicate that the fan is off.





## Equipment maintenance

In order to ensure the best aroma effect, customers are requested to inspect and maintain the machine regularly, as follows:

1. Open the lid of the machine and take out the used essential oil bottle;
2. Every time you change the essential oil, you need to clean the essential oil and filter it;
3. Pour an appropriate amount of alcohol into the essential oil bottle and clean it;
4. After the sorting is completed, pour a small amount of alcohol, install it on the machine, and turn on the machine to work for 5 to 10 minutes;
5. Replace the PE gasket.

(Maintenance once every six months, or when you need to replace a new fragrance, and when you find that the fragrance is getting lighter and lighter)

## After-sales service

The equipment will be guaranteed within one year from the date of sale, but the shell, wires and other vulnerable objects will not be guaranteed. Damage caused by man-made or accidental is not covered by the warranty. If the free warranty period is exceeded, paid maintenance will be implemented.

If you encounter any after-sales problems, please contact authorized sales and service providers in each region, or contact our company's sales center.

**\*Due to the continuous improvement of the company's products, it is subject to change without notice.**

## Troubleshooting

Problem failure	Solution
<b>The equipment is not working</b>	<ul style="list-style-type: none"> <li>① Check whether the power supply is powered on.</li> <li>② Check whether the wrong power supply is used.</li> <li>③ Check the working time of the machine settings.</li> </ul>
<b>No atomization</b>	<ul style="list-style-type: none"> <li>① Check the color of the machine indicator light.</li> <li>② Check whether the air pump is working and whether the atomizing core is clogged.</li> <li>③ Check whether the tracheal sealing ring is damaged or falling off.</li> <li>④ Check whether the oil suction pipe is clogged or falling off.</li> </ul>
<b>Small atomization</b>	<ul style="list-style-type: none"> <li>① Check whether the sealing ring of the air outlet pipe is damaged.</li> <li>② Check whether the atomizing nozzle is clogged.</li> <li>③ Check whether the cooperation between the atomizing core and the atomizing nozzle is loose</li> </ul>
<b>Abnormal noise</b>	<ul style="list-style-type: none"> <li>① Check whether the atomizing head is damaged.</li> <li>② Check whether the gasket is damaged and needs to be replaced.</li> <li>③ Check whether the essential oil bottle and the atomizing head are tightened in parallel.</li> </ul>
<b>Oil leakage</b>	<ul style="list-style-type: none"> <li>① Check whether the air pump is loose and fix it again.</li> <li>② Check whether the air pump is damaged and replace it with a new air pump.</li> </ul>

## Caution



Shall not modify, disassemble or repair the machine arbitrarily. vv



Shall not damage the power cord, force to bend, yank, heavy load, clip or reprocess.



- o Shall not use the AC plug when it is damaged or un-matched with the socket.
- o Shall not wet the machine or the AC plug.
- o Shall not use overloaded power socket, wire or broken plug.



Shall not touch the wire or product shell when thundering or/and lightening.



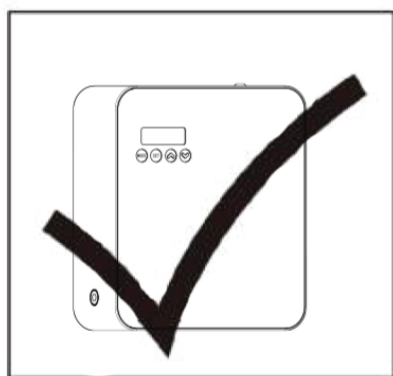
Shall not disassemble the machine when it is under operation.

For any inquiry, please contact our live installation assistant



## Warning:

- After installation, please keep the machine vertical, tilting the machine flat will cause oil leakage and damage to the machine.
- Do not refit, disassemble or repair the machine if you are not a technician. If the machine breaks down, please contact our customer care for help [customercare@aromatrick.co.uk](mailto:customercare@aromatrick.co.uk)
- It is invalid to touch/tap the digital timer button when machine is under lock status.
- Each time cycle should be between (00:01 until 23:59), if you need your device to operate throughout the night time, make sure you divide the operation time to **two cycles**.



do not tilt/turn/move  
when bottle is in device

# Roma trick