

Aroma
trick

A TRICK 20 TO MOVE





Product Introduction

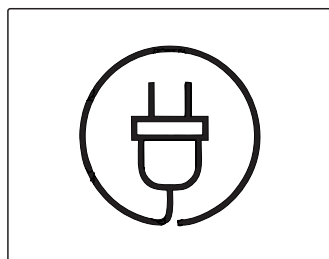
Nano aromatherapy essential oil atomizer, preserve 100% aromatherapy essential oil efficacy, adds a pleasant smell to your living space.

The newly designed PCB control interface features a minimalist style, ensuring quick and easy operation for user convenience.

Attention:

Before using the equipment, please read this user manual carefully and keep it properly.

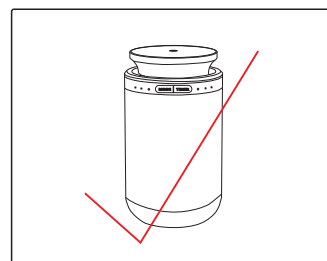
- ▲ Do not use overloaded power sockets, damaged power cables, or adapters, as it may endanger your safety and pose a fire hazard.
- ▲ If you are not a technical professional, do not attempt to modify, dismantle, or repair the equipment to avoid damage.
- ▲ During use, do not invert or tilt the equipment. Please package the essential oils and the machine separately before transportation.
- ▲ Regularly maintain and clean the equipment to ensure it remains in optimal working condition.



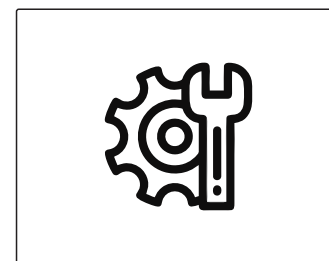
Use a secure
power source



Do not
disassemble

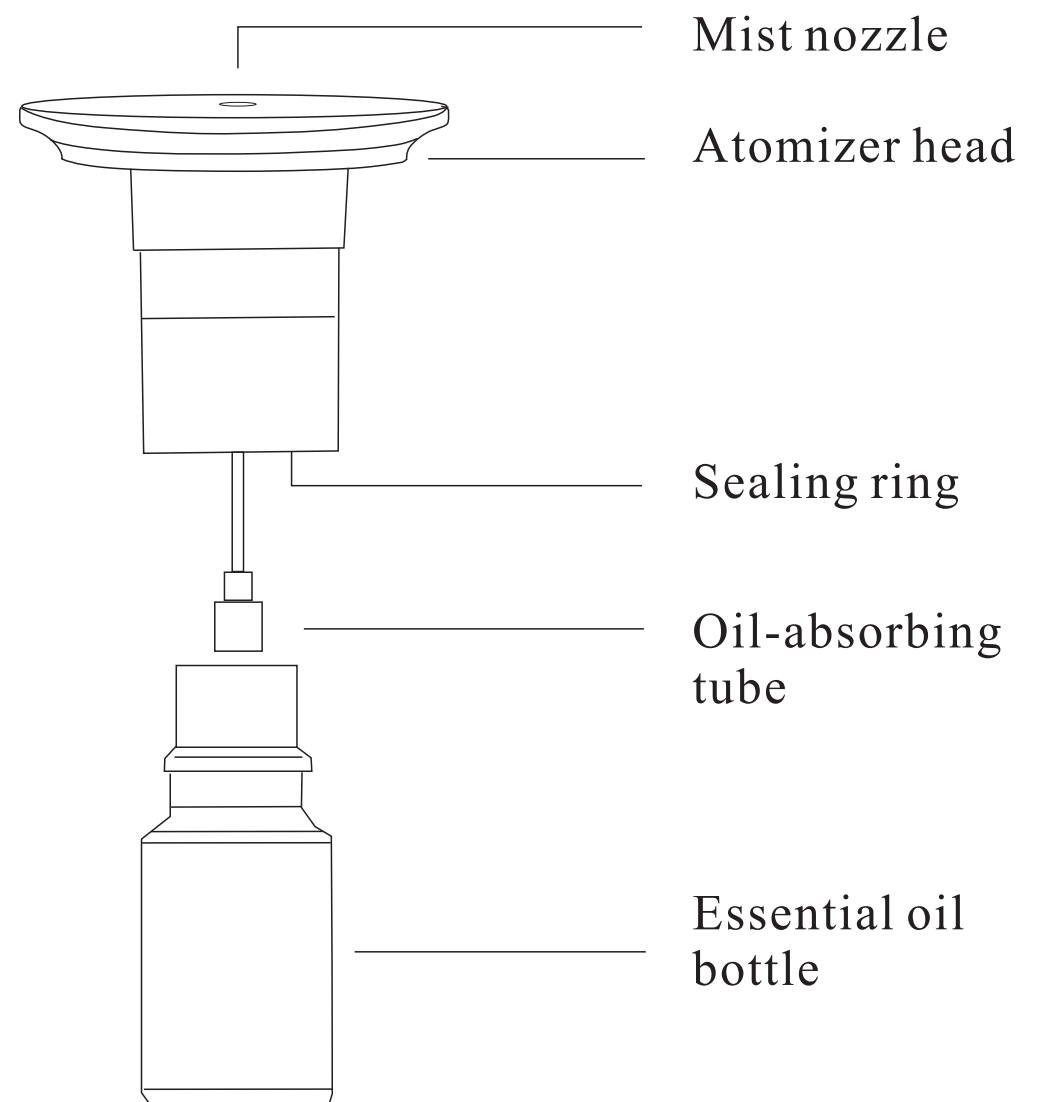
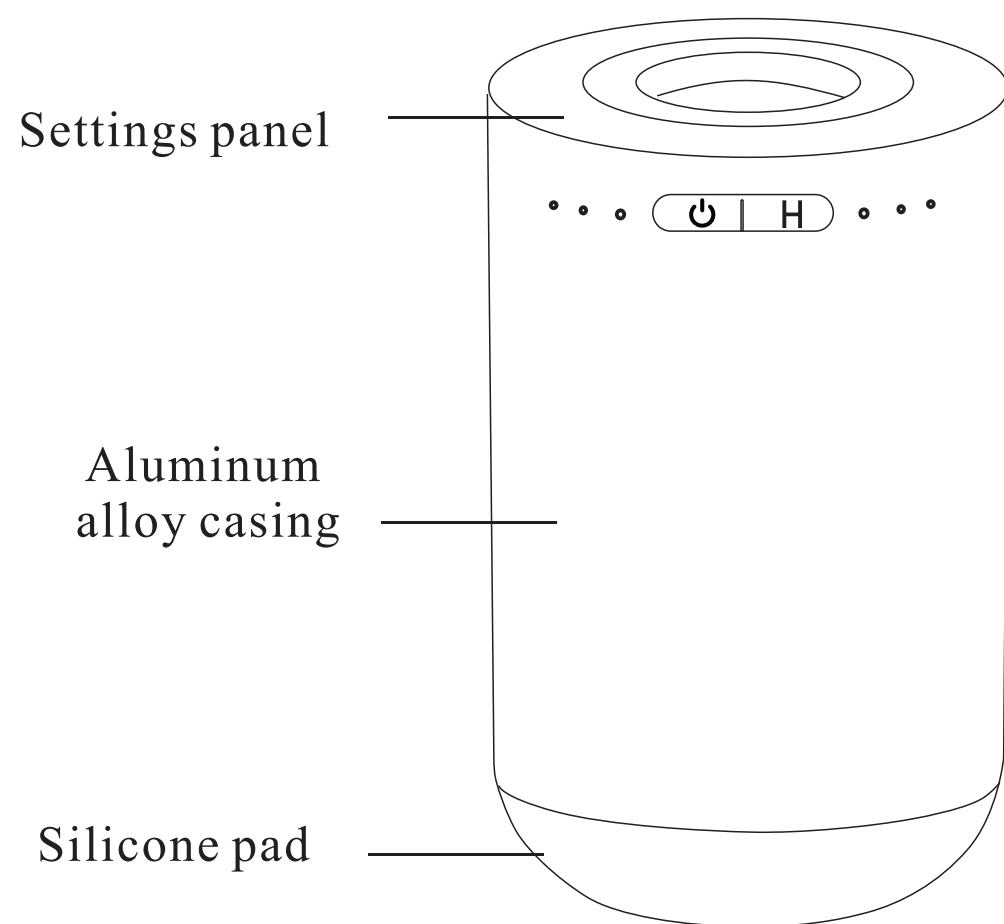


Keep in an
upright position



Clean and
maintain regularly

Product Features



Product parameter

Product Name:Aroma Diffuser

Product Model:M22

Battery Capacity:2000mAh

Product Size:70*137mm

Oil Capacity: 15ml

Rated Input: DC5V-1A

Product Weight: 326g

Coverage Area:100M³

Rated Power:5W

Packaging Size: 208x102x85mm

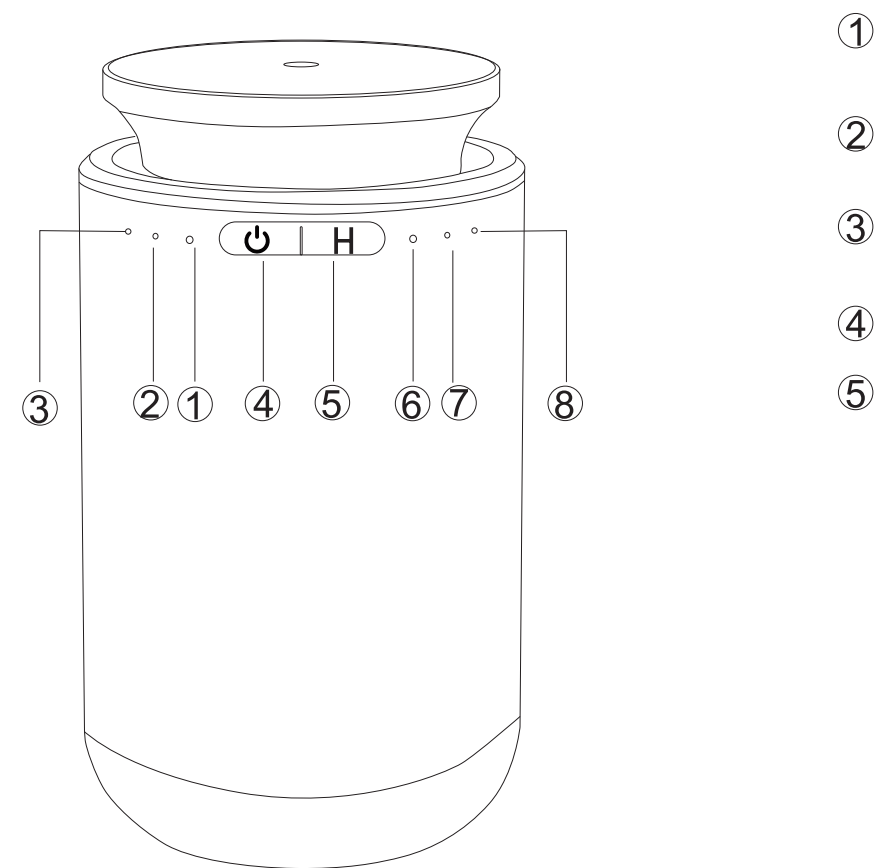
Noise: ≤40dB

Main Materials: Aluminum Alloy+ PP

Control Panel

1. Long press the mode button for 2 seconds to power on/off, short press to switch grades; long press H button for 2 seconds to switch modes, short press to adjust the timer shutdown time; startup mode is CAR mode. The HOME mode does not have a sleep function and operates cyclically according to the grade time. The CAR mode does not have a timed shutdown function, H light off is not work.

2. When switching working grades, the working time will be reset; HOME mode: There are 3 options for the timed shutdown function: ⑥1 hour / ⑦ 2 hours / ⑧ 4 hours, one white light on is timed 1 hour; two white lights on is timed 2 hours; three white lights on is timed 4 hours. Switching grades does not affect the timed shutdown. Charging: grades indicator lights 1, 2, 3 flash sequentially; when fully charged, 3 lights flash simultaneously. Low battery shutdown reminder: All lights flash 3 times simultaneously. After low battery shutdown, it cannot be powered on again. Pressing the power button will only remind low battery. It needs to be charged before it can be powered on again.



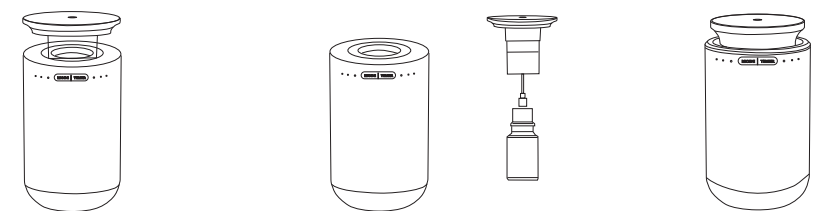
【HOME Mode】

- ① Grade 1: One white light remains on; spray 12S at 165S interval
- ② Grade 2: Two white lights remain on; spray 60S at 120S interval
- ③ Grade 3: Three white lights remain on; spray 120S at 60S

【CAR Mode】

- ① Grade 1: One white light remains on; spray 5S at 180S interval, enters sleep mode if no vibration within 30 seconds.
- ② Grade 2: Two white lights remain on; spray 5S at 90S interval, enters sleep mode if no vibration within 30 seconds.
- ③ Grade 3: Three white lights remain on; spray 5S at 30S interval, enters sleep mode if no vibration within 30 seconds. When switching working grades, the working time will be reset.

Installation Guide:



1. Rotate to remove the atomizer head.
2. Twist to take out the bottle, and fill it with oil.
3. Attach the atomizer head and proceed with the setup.



Operation Reminder

1. Please connect the power or ensure the battery is fully charged.
2. Press and hold button 1 for 2 seconds to power on/off, short press to switch working mode, press button 2 shortly to switch the timing setting.

Troubleshooting

Before preparing to repair the equipment, please first attempt to resolve the following issues using the following methods.

Problem	Solutions	Problem	Solutions
The device is not working.	Please check if the power adapter is DC5V-1A and if the DC end is correctly inserted.	Oil leakage	Check if the essential oil bottle and atomizer head are tightened.
	Check if the device is set to the working program and if it is currently within the working hours		Check if the atomizer head is damaged.
No mist or weak mist	Check if the pump is working, if there is airflow from the mist outlet.	Abnormal noise	Check if the seal of the atomizer head is deformed or damaged.
	Check if the atomization core or suction tube is loose or blocked.		Air pump loose, re-fix the air pump
	Check if the sealing ring of the pump is damaged or detached.		Air pump damaged, replace a new air pump



Troubleshooting

In order to ensure the best diffuser effect, please check and maintain the equipment every six months.

When it is necessary to replace a new fragrance, or the effect of diffuser is weakened, the equipment also needs to be maintained.

Maintenance steps:

1. Unscrew the used essential oil.
2. Pour the appropriate amount of alcohol into the oil bottle and clean it.
3. After cleaning, pour in a small amount of alcohol, install the oil bottle on the equipment, and turn on the equipment Work for 5 to 8 minutes.
4. After cleaning the device, turn off the power.